

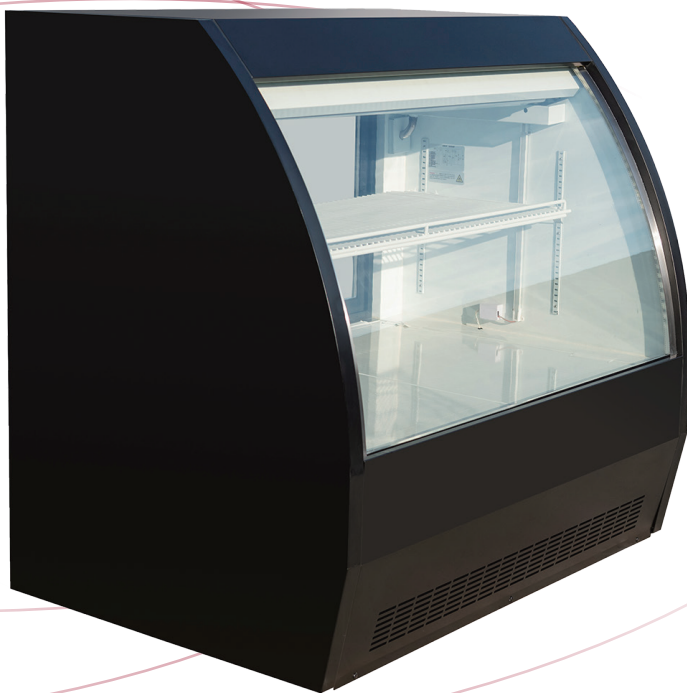


Equipment for the Foodservice Industry

value + quality + service

Refrigerated Deli Cases - Curved Glass

CDC-1200B



CDC-1200B

Features

Features:

- CABINET CONSTRUCTION
 - Exterior - black coated steel
 - Interior - attractive, aluminum liner with stainless steel floor
- Rounded corner design inside of the cabinet makes it easy to clean the inside storage room
- Standard door features: double pane, curved tempered frontal glass
- Refrigeration system: gravity coil
- R290 refrigeration system provides high humidity

environment for exceptional preservation of meats and deli products.

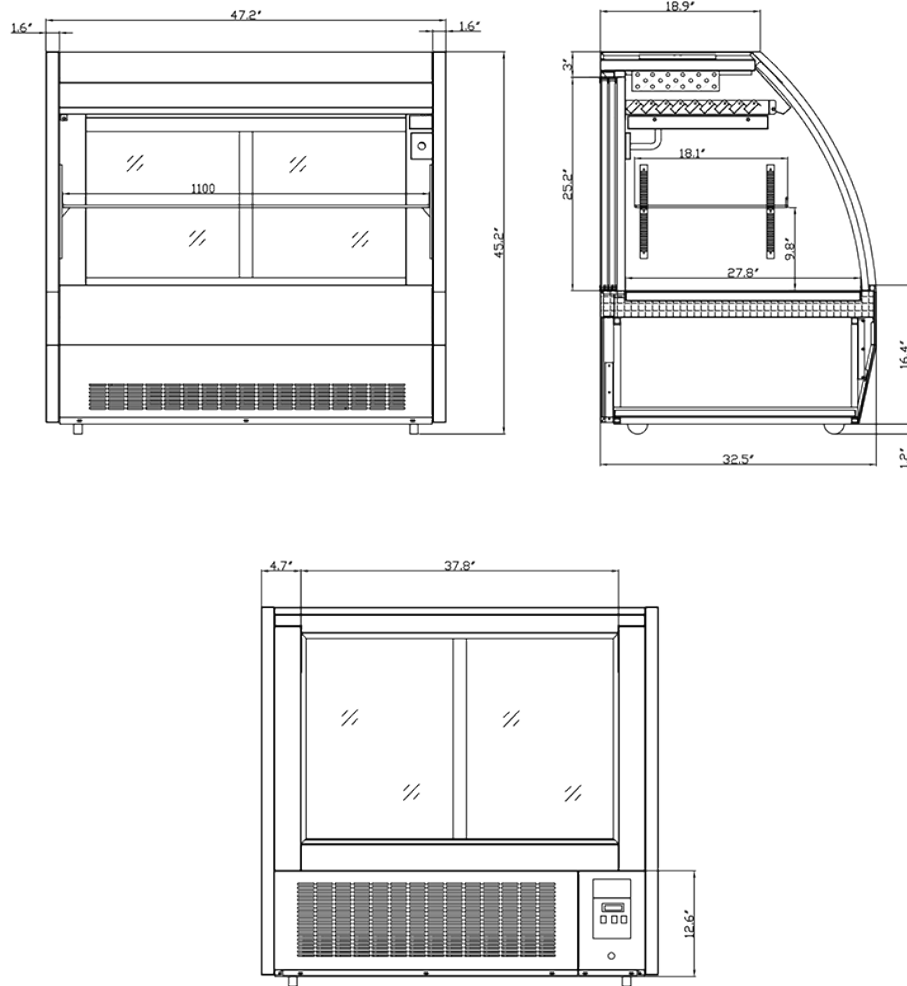
- Refrigeration system holds 32°F to 43°F (0°C to 6°C).
- Electronic control system: adjustable temperature set point and defrost frequency
- Error codes to diagnose service issues
- Adjustable, heavy duty PVC coated shelves
- Standard heavy-duty casters
- Easily accessible condenser coil for cleaning, and easy service access

- LED illumination

Warranty:

- Two year parts and labour; Five years on compressor
- Specifications subject to change without notice



CDC-1200B**Specifications**

Model	Doors	Shelves	Cabinet Dimensions (inches) (mm)			Capacity (L) (Cu Ft.)	HP	Voltage	Amps	Net Weight (KG) (LBS)	NEMA Config.
			L	D	H						
CDC-1200B	2	1	47.2 1199	32.5 825.5	45.2 1148	508 18	1/3	110/60	5	496 225	5-15P 