

# AXIOM-DV-TC

17.9" x 18.5" x 9.0"  
(45.5cm x 47.0cm x 22.9cm)



- Adjusts automatically to varying water pressure
- For high lime areas, BrewLOGIC® technology calculates flow rate and adjusts brew time to maintain consistent pot levels
- Electronic diagnostics and built-in tank drain make service easier
- Ensure coffee quality with programming for brew level, cold brew lock-out and tank temperature, set easily from the front of the machine
- Coffee extraction controlled with programmable pre-infusion, pulse brew and digital temperature control
- Large 200oz. (5.9L) tank provides back-to-back brewing capacity
- Accepts thermal carafe up to 8.5" (21.6 cm) tall
- Energy-saver mode reduces tank temperature during idle periods
- Hot water faucet
- SplashGard® funnel deflects hot liquids away from the hand
- Dual voltage adaptable (Can operate at 120V/15 amp or 120/208-240V/20 amp)
- Use in quick turn environments where high quality coffee is continuously refreshed

Agency:

## Specifications

**Product #:** 38700.6011

**Water Access:** Plumbed

**Finish:** Stainless

**Funnel:** Black Plastic

**Faucet:** Upper

## Additional Features

DBC

## Electrical & Capacity

Volts	Amps	Watts	Cord Attached	Plug Type	8oz cups/hr 236ml cups/hr	Input H <sub>2</sub> O Temp.	Phase	# Wires plus Ground	Hertz
-	-	-	-	-	-	60°F (15.5°C)	-	-	-

## Plumbing Requirements

PSI	kPa	Fitting Supplied	Water Flow Required (GPM)
20-90	138-621	1/4" Male Flare Fitting	-

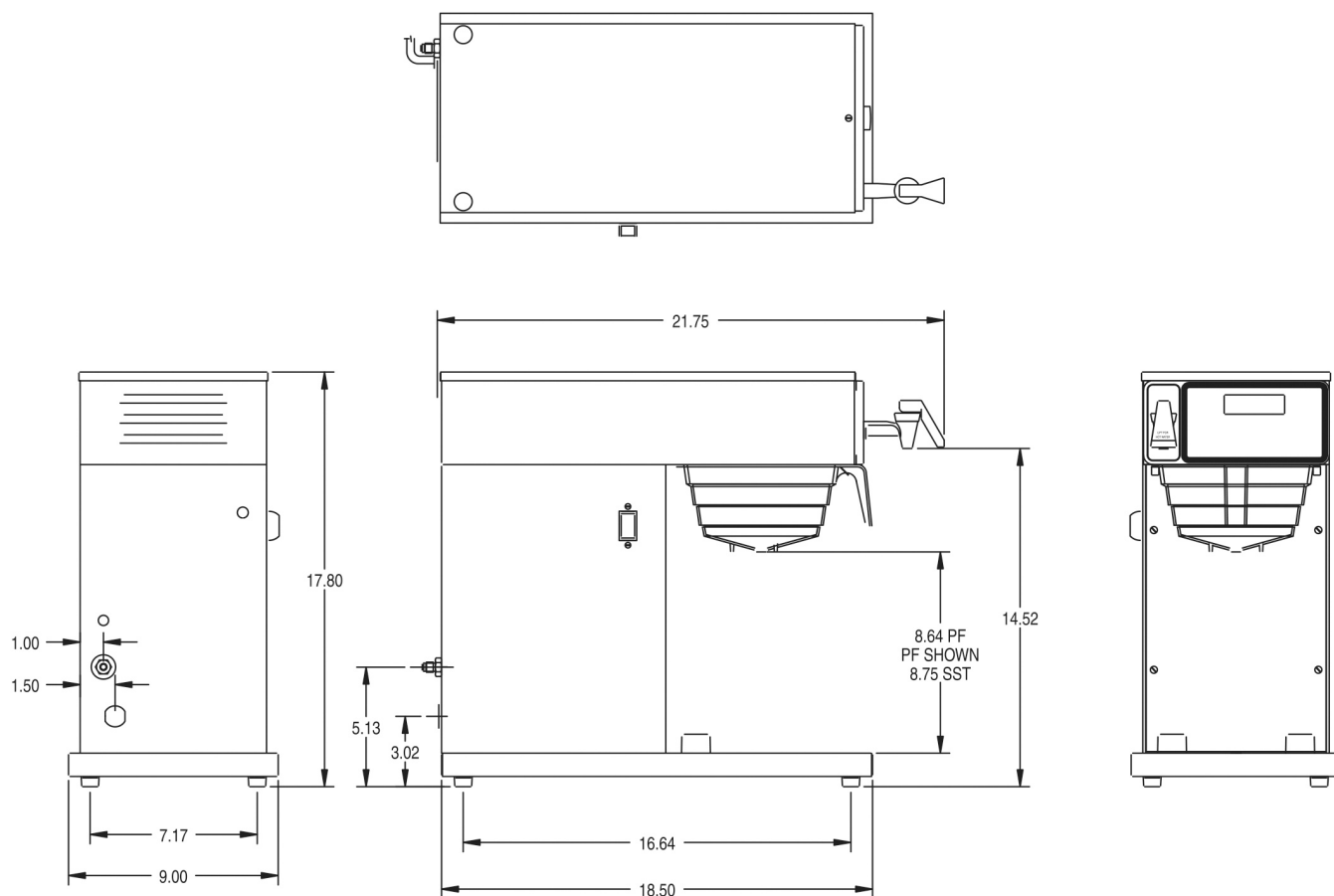
## CAD Drawings

2D	Revit	KLC
●		



BUNN® reserves the right to change specifications and product design without notice. Such revisions do not entitle the buyer to corresponding changes, improvements, additions or replacements for previously purchased equipment. For most current specifications and other info visit [bunn.com](http://bunn.com).

Created on:  
05/09/2018



Unit				Shipping				
	Width	Height	Depth	Width	Height	Depth	Weight	Volume
English	9.0 in.	17.9 in.	18.5 in.	- in.	- in.	- in.	-	-
Metric	22.9 cm	45.5 cm	47.0 cm	- cm	- cm	- cm	-	-



BUNN® reserves the right to change specifications and product design without notice. Such revisions do not entitle the buyer to corresponding changes, improvements, additions or replacements for previously purchased equipment. For most current specifications and other info visit [bunn.com](http://bunn.com).

Created on:  
05/09/2018

Related Products & Accessories:AXIOM-DV-TC(38700.6011)



FILTERS,REG/1M

Product #: 20115.6000



WATER FILTER  
SYSTEM,EQ-17-TL

Product #: 30200.1000



WATER FILTER,IN LINE  
ED-17-TL

Product #: 30201.1001



Serving & Holding Options: AXIOM-DV-TC(38700.6011)

 <p>ACC, 1.9L THERMAL CARAFE SST</p> <p>Product #:18022.6002</p>	 <p>THERMAL CARAFE, BLK 1.9L 12PK</p> <p>Product #:36029.0000</p>	 <p>THERMAL CARAFE, BLK 1.9L 1PK</p> <p>Product #:36029.0001</p>	 <p>THERMAL CARAFE, ORN 1.9L 12PK</p> <p>Product #:36252.0000</p>	 <p>THERMAL CARAFE, ORN 1.9L 1PK</p> <p>Product #:36252.0001</p>
 <p>CARAFE, SST 1.9L SHRT BLK 1/</p> <p>Product #:40163.0000</p>	 <p>CARAFE, SST 1.9L SHRT ORN 1/</p> <p>Product #:40163.0001</p>	 <p>CARAFE, SST 1.9L SHRT BLK 12/</p> <p>Product #:40163.0100</p>	 <p>CARAFE, SST 1.9L SHRT ORN 12/</p> <p>Product #:40163.0101</p>	

